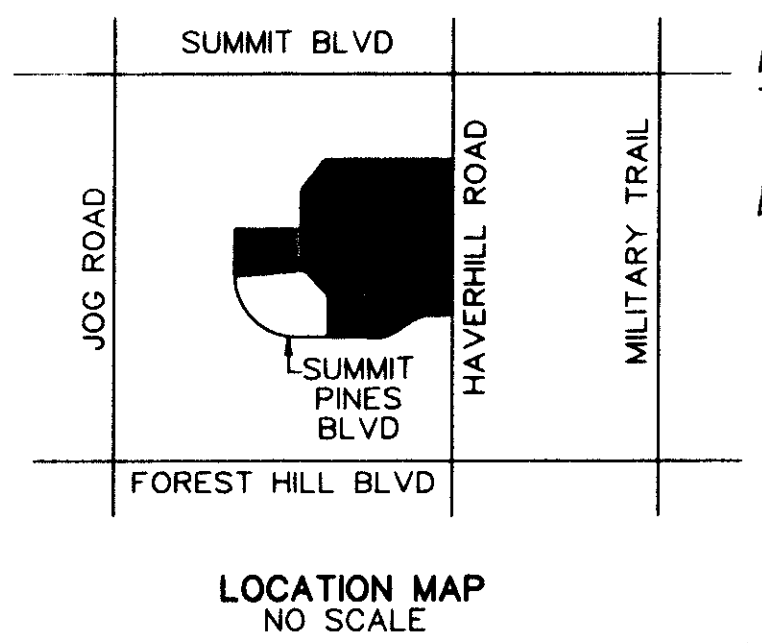


BRANTLEY PLACE

BEING A REPLAT OF THE LIFT STATION SITE, SUMMIT PINES UNIT ONE, PLAT BOOK 52, PAGES 31-34 AND A PORTION OF THE NORTHEAST QUARTER (N.E.1/4) OF SECTION 11, TOWNSHIP 44 SOUTH, RANGE 42 EAST, PALM BEACH COUNTY, FLORIDA, BEING PART OF A P.U.D.

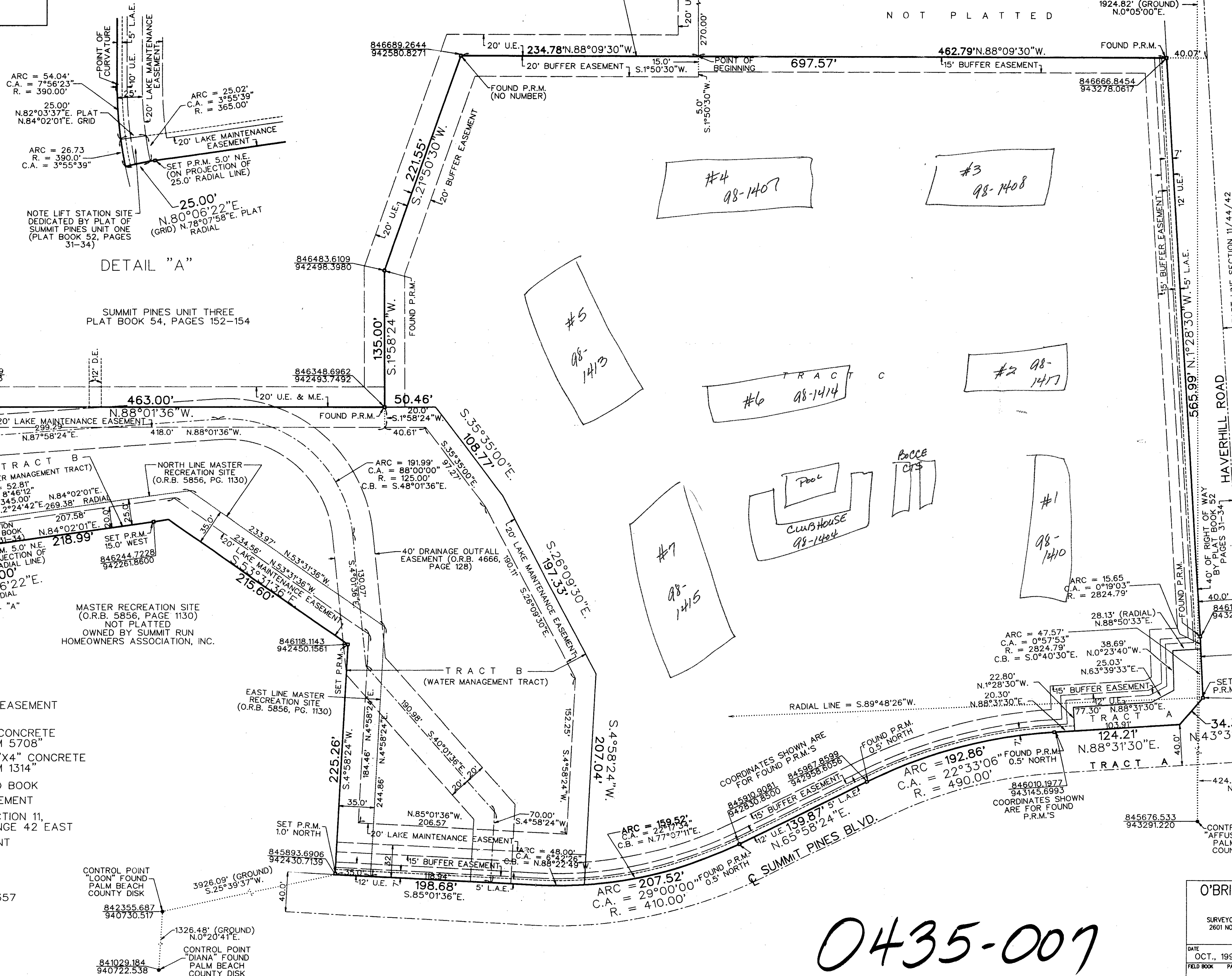
SHEET 2 OF 2

SCALE: 1" = 50'



SUMMIT PINES UNIT THREE
PLAT BOOK 54, PAGES 152-154

NOT PLATTED



DETAIL "A"

SUMMIT PINES UNIT THREE
PLAT BOOK 54, PAGES 152-154

NOTE LIFT STATION SITE DEDICATED BY PLAT OF SUMMIT PINES UNIT ONE (PLAT BOOK 52, PAGES 31-34)

MASTER RECREATION SITE (O.R.B. 5856, PAGE 1130) NOT PLATTED OWNED BY SUMMIT RUN HOMEOWNERS ASSOCIATION, INC.

LEGEND:

- C = CENTERLINE
- L.A.E. = LIMITED ACCESS EASEMENT
- U.E. = UTILITY EASEMENT
- SET P.R.M. = SET 4"x4" CONCRETE MONUMENT STAMPED "PRM 5708"
- FOUND P.R.M. = FOUND 4"x4" CONCRETE MONUMENT STAMPED "PRM 1314"
- O.R.B. = OFFICIAL RECORD BOOK
- M.E. = MAINTENANCE EASEMENT
- SECTION 11/44/42 = SECTION 11, TOWNSHIP 44 SOUTH, RANGE 42 EAST
- D.E. = DRAINAGE EASEMENT
- C.A. = CENTRAL ANGLE
- R. = RADIUS
- C.B. = CHORD BEARING
- SCALE FACTOR = 1.0000357

CONTROL POINT "LOON" FOUND PALM BEACH COUNTY DISK
842355.687
940730.517

CONTROL POINT "DIANA" FOUND PALM BEACH COUNTY DISK
841029.184
940722.538

PET. 84-160
AVOC. #0001
NO SCHOOLS
5/2/2/F

PET. 84-160
PARCEL CA-4
SUMMIT PINES PUD

82/87

0435-007

O'BRIEN, SUITER & O'BRIEN, INC.
LAND SURVEYORS
CERTIFICATE OF AUTHORIZATION #LB353
SURVEYOR AND MAPPER IN RESPONSIBLE CHARGE: JOHN N. SUITER
2601 NORTH FEDERAL HIGHWAY, DELRAY BEACH, FLORIDA 33483
(561) 276-4501 732-3279 FAX 276-2390

DATE	OCT., 1997	SCALE	1" = 50'
FIELD BOOK	PAGE NO.	ORDER NO.	92-234db"PL"